



Emmanuel
Lutheran Church

FLING WIDE THE DOOR

...Embracing All in Christ

2023 ANNUAL STEWARDSHIP
AND CAPITAL APPEAL





Emmanuel

Dear Community of Emmanuel,

It is with gratitude that I share the theme for our 2023 ANNUAL STEWARDSHIP and CAPITAL CAMPAIGN: ***Fling Wide the Door...Embracing All in Christ***. First and foremost, this is descriptive of Christ who was always flinging wide the doors by both inviting people and going to people. Christ is ***THE WELCOMING PRESENCE***, *inspiration from which our congregation draws. This good news must prevail for us to Fling Wide the Door to Embrace All in Christ!*

We live in a world where the good news of Jesus can feel closed off to people – inaccessible. As the strategic development team for this campaign reflected on our collective purpose and the goals for our communities, I found myself flipping through the hymnal. As I landed in the Advent section, the hymn, ***Fling Wide the Door*** struck me. We are in the advent of something new!

Since 1999, when we hosted our first cottage gatherings after being called here, I have watched Emmanuel Fling Wide the Door. We are intentional. We aren't simply making room for people; we are embracing them...IN Christ...which is us living out the gospel.

Our **ANNUAL STEWARDSHIP** sustains our worship, education, care, and outreach opportunities and needs to grow by about \$200,000 next year to keep up with salary increases, health insurance, property insurance and to add new programs.

To those without a church home, a church building can look like a fortress. But God's people are seeking belonging, healing, trust, and grace. Through our multiple worship services, faith formation, and hospitality efforts, we will grow our ability to reach and serve God's people where they are with a goal of 1,200 people in person and 1,000 people online by December 31, 2028.

To those without means, a place of means can feel unattainable. Through **Emmanuel Communities** we have started the work to ***Fling Wide the Door*** at the Park through worship and meals, but there is more to do. Through our efforts to organize and partner with other providers in the community, this Campaign will help us realize our goal of building a Mission Center that supports the basic needs of people in the community and brings them together.

Through **Emmanuel Academies** we have also started to ***Fling Wide the Door***. Our students, from around the world, who have been unable to answer God's call to ministry due to relocation and financial burdens are now being educated from within their own context to ***Fling Wide the Door*** in their own communities.

Friends of Emmanuel, as we embark together on this new Campaign, I invite you to consider the ways God has flung wide the door to embrace you through the ministry we share here. Thank you for being part of this community, this ministry, and this effort to embrace all in Christ!

With gratitude for God's grace,

Pastor Steven Wigdahl



APPEAL SUMMARY:

Our Campaign, *Fling Wide the Door...Embracing All in Christ*, includes our Annual Stewardship Appeal for 2023 and our Capital Appeal. We are seeking your support for both components of this campaign. Projects funded through the Capital Appeal will break down barriers by expanding access to worship, faith formation, quality theological education, and hospitality. The Capital Appeal funding will position us organizationally, structurally and financially for long-term sustainability.

Following the destruction of Hurricane Ian, leadership reflected on this campaign’s timing and goals. Responding to God’s Call to expand our ministries, as has been our vision for 20+ years under Pastor Steve’s leadership, is even more important to us than ever. Some projects may be deferred for a couple of years or until planned gifts cover the implementation costs. Capital appeal gifts may be unrestricted or restricted to specific projects.

Projects will be funded in the following order:

| | |
|---|----------------|
| Infrastructure at the Park | \$1.5 million |
| Refreshing our Life Together at Mooring Line Drive..... | \$2 million |
| Operational Funding for Emmanuel Academies | \$1.25 million |
| Community Hall at the Park | \$5.5 million |
| Scholarships for 50 Seminarians | \$1.5 million |
| New Programs for Emmanuel Park Church | \$500,000 |
| Spanish Language Master of Divinity | \$250,000 |
| Welcoming and Hospitality Space..... | \$5.25 million |
| Emmanuel Academies Endowments..... | \$2 million |
| General Endowment | \$1 million |

Gifts to cover the campaign costs have already been received. The Good Samaritan Fund will be funded with 5% of gifts until \$250,000 has been added to the fund.

While our projects fall into one of four primary categories:



EMBRACING THROUGH
WORSHIP



EMBRACING THROUGH
EDUCATION



EMBRACING THROUGH
HOSPITALITY



EMBRACING THROUGH
LEGACY



ANNUAL FUND

As we look to the future of Emmanuel Lutheran Church and Communities, we must faithfully consider the long-term and the short-term. While our ***Fling Wide the Door*** Capital Campaign is designed to help us meet the needs of the long-term, our normal annual stewardship efforts each January and February are designed to help us meet the short-term growing needs of the ministry. In an effort to simplify giving for you this year, we will be calling our Annual Stewardship Appeal ***Fling Wide the Door*** also. We will use a single Promise Card with a line for your short-term Annual Stewardship Gift and a line for your long-term Capital Campaign gift.

Our Ministry Funding Plan designed to help us be good stewards of your short-term annual stewardship gifts will increase by a little more than \$200,000 this year to help us cover three New Key Ministry Initiatives.

NEW MINISTRY INITIATIVE NO. 1: SUSTAINING MINISTRY EXCELLENCE

A necessary part of sustaining and growing a ministry of excellence is meeting the demand of growing costs and needs of the ministry. Like many businesses and families, our congregation experienced rising costs in 2022 of insurance, cost of living, utilities, and maintenance. This increase will directly affect the cost to sustain our ongoing ministry of worship, pastoral care, faith formation, and more. Through your generosity, we will be able to meet our obligations and sustain a ministry of excellence that enables the people of Resurrection to be engaged, equipped, and empowered to share the gospel throughout the world.

NEW MINISTRY INITIATIVE NO. 2: GROWING FAITH FORMATION MINISTRY

As we work to create opportunities to worship and serve, we know that faith formation is a critical part of making and growing disciples. We have plans to add additional faith formation classes and events throughout our communities to meet the spiritual needs of those who call Emmanuel home and new faces who are getting to know us. Your increased generosity to the annual fund this year will help ensure we are making disciples and growing faith.

NEW MINISTRY INITIATIVE NO. 3: REENGAGING & EXPANDING RELATIONSHIP BUILDING

Covid taught us that we are created for the community, and we have missed being together. As we continue to emerge on the other side of the pandemic, we plan to increase our efforts around growing the community and building relationships with one another. New retreats are planned for groups like the Alpha class and the grief class to name a few. These will include videos and workbooks. To expand on our ability to build and strengthen relationships that transform lives, we need additional funding in this area of our annual fund in 2023.

As you prayerfully consider your generosity for our long-term capital campaign, we invite you to also prayerfully consider what God is calling you to give to our ongoing, day-to-day ministry of forming faith and making disciples for Christ.

MOORING LINE DRIVE | \$7.25 MILLION

WELCOMING & HOSPITALITY SPACE | \$5.25 MILLION

Churches can feel like fortresses and first impressions last. It is a difficult decision for a person to consider a visit to a new congregation. God is calling us to “Big Hospitality” that flings wide the door.

We have a well-positioned courtyard that is not utilized to its best advantage. With this plan, this area will be transformed to become our Front Door on Sunday mornings and throughout the week. Our goal is to welcome 1,200 members and visitors to all the Worship, Community Partnerships, and Fellowship opportunities provided by Emmanuel.



- This welcoming space will allow a comfortable area that will encourage conversation and fellowship before and after Sunday services and for the many gatherings during the week.
- The Atrium will also provide a larger, climate-controlled space with comfortable seating and tables and that will become the “hub” of activity for worship services on Sunday and for Community Partnerships during the week thus expanding our outreach.
- The Atrium will facilitate increasing the number of attendees to Pastor Bliese’s weekly vibrant educational programs.

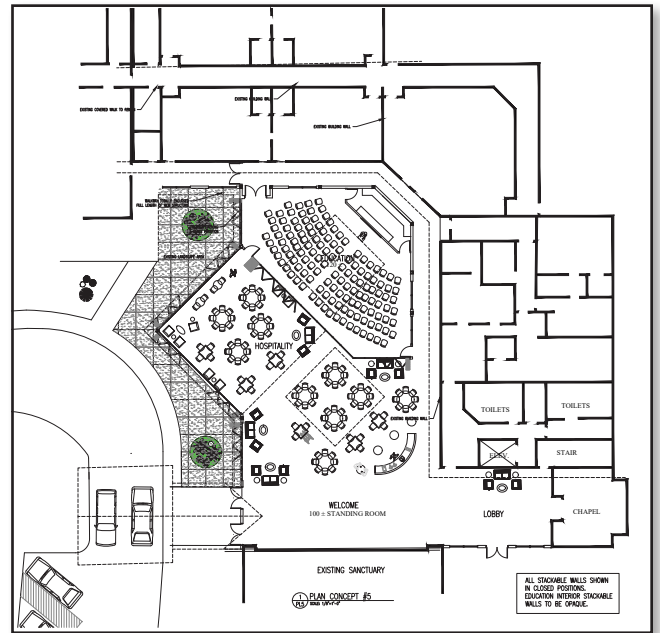
The plan includes a main reception area to be utilized throughout the week and will provide leasing and rental opportunities for the community. The space will include a coffee bar, and we can use it for community events, conferences, concerts, and more.

REFRESHING OUR LIFE TOGETHER | \$2,000,000

While we work to *Fling Wide the Door* through more visible hospitality of our space, we will also work to improve other areas of our facility that house our worship and educational experiences and help make our life together more meaningful and faith formation focused. This includes:

- Sanctuary Renovation \$400,000
- New multi-media studio \$100,000
- New programs for the new space \$300,000
- Family Life Center/Kitchen renovation \$700,000
- General facility care \$500,000

General facility care will include signage, renovation of restrooms, and office upgrades. New programs will allow for our new atrium space to be filled with vibrant programs that reach current Emmanuel members and the wider Naples Community.





It will be a place that welcomes all. Regardless of the community you belong to, the multiple entrances will bring us together in one place. This new place will enable everyone to see what we offer including, hospitality, care, fellowship, and various types of worship, including multicultural and bilingual. It will show how we serve the community through ministries like daycare and AA groups. It will also help us educate people, make disciples, and pray in a more intimate way. ~ Pastor Jose Lebron

EMMANUEL ACADEMIES | \$5 MILLION

At the conclusion of this appeal, Emmanuel Academies will be 10 years old and will have lived into its vision as a “theological institution in the South, facing Southward.” Additionally, we will have equipped more than 100 pastors upon our 10th anniversary, including 30 new ELCA pastors here in the US, with the balance in Central & South America and Africa. We will also have seeded similar institutions in Rwanda and Central and South America, with each serving more than 50 of their own seminarians. This initiative is a blessing to Emmanuel as we interact and learn from our seminarians and blesses the larger church both here and abroad.

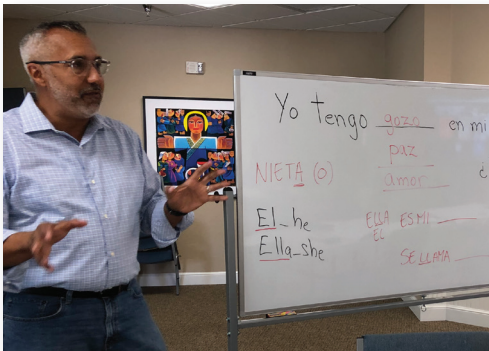
OPERATIONAL FUNDING FOR THE NEXT FIVE YEARS | \$1,250,000

Until permanent scholarship funding is in place, faculty positions are endowed and a national base of donors are in place to support Emmanuel Academies, we need to provide \$250,000 per year in core operational funding.



SCHOLARSHIPS FOR 50 SEMINARIANS | \$1,500,000

Seminary is a significant life change for our seminarians and alleviating any education debt for them allows them to serve in whatever context to which they are called. The scholarship total is calculated based on a projected annual cost of \$6,000 per student for an average 5-year program for 50 seminarians in the Master of Divinity program. Additionally, the delivery model of our program leverages the context of the seminarian and includes a three-mentor team, keeping our cost at less than 1/5th the cost of other seminaries to provide a comparable education.

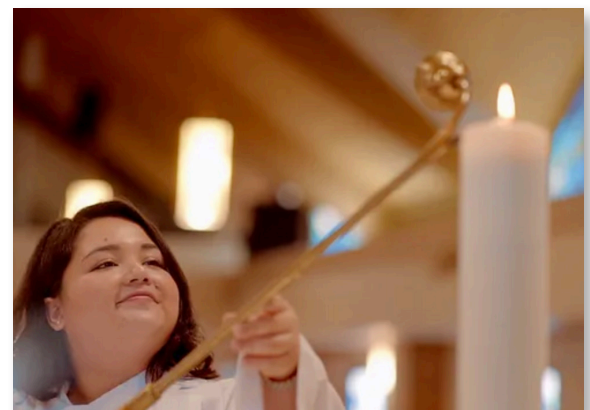


SPANISH LANGUAGE MASTER OF DIVINITY PROGRAM | \$250,000

This funding will facilitate our engagement of leading Spanish-speaking theologians in the US and abroad to develop and begin to deliver a contextually appropriate accredited degree program entirely in the Spanish language. This new Spanish language MDiv will include appropriate materials, exercises, and tools. It will be launched in Central and South America for a significantly large demographic of people. This program will expand Emmanuel Academies to fulfill its original vision and provide for a need not filled anywhere else in the ELCA.

EMMANUEL ACADEMIES ENDOWMENT | \$2,000,000

Emmanuel Academies’ long-term sustainability includes the cornerstone of an endowment. A leadership endowment gift has been secured to permit us to begin building a fund. Additions to the endowment can be targeted to benefit scholarship funding or to more broadly support our delivery of theological education and pastoral formation long into the future. Your gifts to support the endowment, whether funded during this campaign or subsequently through planned gifts, will provide the legacy of raising up competent leaders for the church for decades to come.





As Northeast Collier County continues to be one of the fastest growing areas in the nation, so too does the need to share the gospel. Thousands of houses, apartments, and condominiums are being built within a 5-mile radius of Emmanuel Park, bringing tens of thousands of people to our area. Who will bring Christ to them? This Community Hall will connect neighbors native and new as a gathering space for events, concerts, and worship. It will serve as a hub for the community, changing lives by the power of the Holy Spirit through partners in education, stewardship, and service. What an opportunity God gifts us: to live out now the kingdom that the world looks forward to!

~ Pastor Will Kittinger

EMMANUEL COMMUNITIES | \$7.5 MILLION

The land that is now part of Emmanuel Community Park was acquired more than 15 years ago to bring Jesus to the fastest growing area of our community. Over time, additional parcels were acquired with donor support, and our new church start on the site has been led by Pastor Will for the past 18+ months. This new community of faith is as diverse as our community, and it is growing each week.

Emmanuel Communities is ready for the next level of development at the Park. The current operating budget covers staffing, hospitality, and our current ministry there. At this time, we own thirty-six acres with 9 acres prepared for development. Already in place are the lake, soccer field, playground, and parking. In this campaign, we will prepare an additional 12-14 acres for next-stage development that includes indoor space and more infrastructure.

NEW PROGRAMS FOR EMMANUEL PARK CHURCH | \$500K

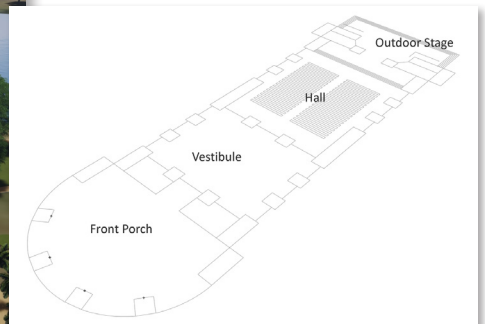
To begin to capitalize on growth opportunities as the site is further developed, improved marketing, additional programming, and other expenditures are needed to find and attract people looking to find a church home.

COMMUNITY HALL | \$5.5 MILLION

The primary building on the site, overlooking the lake, will be a place for indoor worship and community events. This space will also feature a covered, outdoor stage and a covered entry. This facility will transform the park into a community center that allows for many forms of worship to continue to attract new people into our ministry.

ADDITIONAL INFRASTRUCTURE—PARKING & SITE PREP | \$1.5 MILLION

To bring water and sewer into the site, \$750,000 is needed. Another \$350,000 is needed to provide the connections on site with another \$400,000 in site preparation needed for the development of the next acreage. This infrastructure cost will allow the Park to reach its potential and welcome hundreds, if not thousands of people per week to the site.





EMMANUEL GENERAL ENDOWMENT | \$1.25 MILLION

GENERAL ENDOWMENT AND CAMPAIGN COSTS | \$1.25 MILLION

In addition to outright gifts to the campaign to fund these important projects, a general endowment for the congregation will be established at \$1 million to keep the ministry strong and provide for a source of funds to allow for creative new ministry to be launched. Healthy non-profits receive 15% of their revenues from endowment and this fund will get us started toward that goal. Estate gifts, that is leaving a gift through your Will, life insurance policy, IRA, home, trust, or other means, will be used to grow the fund in the future as we establish a sustainable legacy.



EMMANUEL GOOD SAMARITAN FUND | \$250K

GOOD SAMARITAN FUND | \$250,000

Through the efforts of the campaign, Emmanuel will generously expand our Good Samaritan Fund using 5% of each gift, up to \$250,000 for the purpose of supporting our staff and others in the community who find themselves in need. This fund serves to meeting the unplanned needs of those in our community in a more immediate and confidential manner.

TOTAL CAMPAIGN GOAL:
\$21,500,000





Humbly, we are accepting the mantle put around our shoulders to train new leaders. I don't think we could defend ourselves in not accepting that challenge. Through Emmanuel Academies, we are saying, Yes Lord.

~ Pastor Rick Bliese

GIVING CHARTS The *Fling Wide the Door* Capital Campaign Goal \$21,500,000

We invite you to prayerfully consider how God is calling you to invest in the stewardship of our shared ministry that serves to embrace all in Christ. Through this faithful and well-planned Campaign, we seek to secure a total of \$21,500,000 in gifts and pledges. Should we fall short in funding these projects with immediate gifts, deferred gifts through the estate of a donor will be used to secure the total. Projects will not be launched until authorized by the Council and Congregation.

The following gifts will be needed in order to reach our goal:

| # OF GIFTS | AMOUNT OF GIFT | TOTAL |
|------------------|----------------|-----------------|
| 1 | \$5 million | \$5 million |
| 1 | \$3 million | \$8 million |
| 1 | \$1 million | \$9 million |
| 2 | \$750,000 | \$10.5 million |
| 4 | \$500,000 | \$12.5 million |
| 8 | \$250,000 | \$14.5 million |
| 12 | \$100,000 | \$15.7 million |
| 16 | \$75,000 | \$16.9 million |
| 22 | \$50,000 | \$18 million |
| 24 | \$30,000 | \$18.7 million |
| 38 | \$20,000 | \$19.5 million |
| 48 | \$12,000 | \$20.05 million |
| 60 | \$7,500 | \$20.5 million |
| 60 | \$4,500 | \$20.77 million |
| 42 | \$1,095 | \$21 million |
| 400 GIFTS | | |

Contributions to the *Fling Wide the Door* Campaign may be committed in the form of a one-year gift or a three-year gift. These will be noted on your Gift Intent Card. As gifts are received and pledges are paid, we will continue to implement projects. Payments toward commitments will be gratefully received on a weekly, monthly, quarterly, or annual basis and on a beginning/ending schedule convenient to you.

All those who contribute to this campaign will be recognized in a final report of the campaign. Gifts may be made in honor/memory of a loved one and those gifts will be recognized on a final honor/memorial report. In addition, the following items can be named in honor or memory of someone and will be tastefully recognized either with a small plaque in the space, or on the financial reports in the case of endowments:

| | |
|---|--------------------------|
| Entire Atrium Welcoming and Hospitality Space at MLD | \$5.25 million |
| Community Hall entire facility naming at Emmanuel Park | \$3 million |
| One side of Atrium Welcoming and Hospitality Space at MLD | \$2.5 million (2 needed) |
| Emmanuel Academies Endowment | \$2 million |
| Community Hall indoor worship space at Park | \$2 million |
| Faculty Chair Endowment at Emmanuel Academies | \$1 million (2 needed) |
| General Endowment for Emmanuel Lutheran Church | \$1 million |
| Community Hall Vestibule at Park | \$1 million |
| Parking Lot at Emmanuel Park | \$750,000 |
| Family Life Center and Kitchen at MLD..... | \$700,000 |
| Community Hall Outdoor Stage at Park | \$500,000 |
| Community Hall Covered Entry | \$300,000 |
| Scholarships for 10 seminarians..... | \$300,000 |
| Spanish Language M-Div at Emmanuel Academies..... | \$250,000 |
| Multi-media studio at Mooring Line Drive | \$100,000 |
| Scholarship for a Seminarian | \$30,000 (50 needed) |

COMMONLY ASKED QUESTIONS

Q: What am I being asked to do for the Fling Wide the Door Campaign?

A: We are asking that you fill out a Gift Intent Card with a financial commitment. That commitment can be fulfilled through a one-time payment, over a three-year period, or on a timeframe in between. The quicker we receive gifts, the sooner we can begin each new project. Increased giving to the annual fund is needed immediately.

Q: When do my gift payments for the campaign begin?

A: "The annual fund is for all of 2023." Unless you prefer a different timetable, the offering period begins April 1, 2023. The Gift Intent Card has a place for you to indicate how and when you will fulfill your commitment.

Q: How long does the campaign last?

A: The Campaign will last for three years. However, if you feel you can make a larger gift by extending the time, you are welcome to do so. You may also make a one-time gift or contribute over fewer than three years. The quicker we receive gifts, the sooner we can begin each new project.

Q: Is it possible to just make gifts to the campaign without making a specific commitment?

A: Yes, but written responses, while never legally binding, give us an indication of what we can expect and permit us to plan for the future. Please fill out a Gift Intent Card indicating how you will respond even if you do not make a commitment. The response from the congregation will be a compelling story to share as we move forward in ministry.

Q: Will I be asked to give a specific amount?

A: You will be asked to prayerfully consider an amount based on the gift chart to reach our goal. If every gift on the chart is fulfilled, we will exceed our goal.

Q: Why are we being asked to give to the ongoing ministry through the annual fund as well as the campaign at the same time?

A: The **Fling Wide the Door Campaign** will empower us to complete the projects outlined above and position us for the future as our congregation grows and ministry changes. As we enter into this campaign, we will continue to provide our ongoing ministries to children, youth, families, and adults. We will continue to offer worship and pastoral care. We will continue to reach out with love and service to our community. These are all funded through the generosity of our members on an annual basis through our regular giving. The projects listed in this **Fling Wide the Door Campaign** are above and beyond our regular and ongoing ministry and regular annual giving.

Q: Do all gifts to the campaign have to be cash?

A: No. Gifts of property, appreciated stock, required minimum distributions from an IRA, mutual funds, cash value from insurance policies or policy loan proceeds, certificates of deposit (CDs), bonds, and annuities are just some of the ways we can give. For those who qualify, giving via a Required IRA Distribution may be the best way to contribute. All of these gifts may be subject to restrictions and limitations and each giver's circumstances are unique, so it is wise to consult your financial advisor or accountant.

Note: Contact Vivian Shea, Chief Operating Officer at the church office to make non-cash gifts. Important! Do not sell the asset yourself or you will be unable to avoid capital gains tax. If you are trying to capture a capital loss, you may want to sell the asset yourself. Please consult your tax advisor on the best approach for your own circumstances.

Q: What is the advantage of giving appreciated stocks or property?

A: You can avoid capital gains taxes and possibly also receive a tax deduction in the amount of the appreciated value.

Q: How do I make a gift of appreciated stock?

A: Have your broker transfer shares from your account to the church. The church's broker will sell the stock and you will receive gift credit for the average market value on the day it is transferred. Contact Vivian Shea, Chief Operating Officer at the church office for transfer information.

BEST WAYS TO MAKE A GIFT

Most people think about writing a check to make a gift or using their credit card if they are on a website. However, there are three methods of giving that can be far better than writing a check.



1. If you are age 70.5 years old or older and have a traditional IRA, you are eligible to make a contribution directly from that account to a charity and have it count as a Qualified Charitable Distribution (QCD). This will result in no income tax due to you as you won't be taking it as a distribution to you. So, you avoid income taxes, get to make a gift to charity, and have it count as your Required Minimum Distribution (this is a thing once you are 72). If you are 70.5 years old and have a traditional IRA this is almost always the best way to give. If you have a 401k or 403b, you can roll that over to an IRA and then use this gifting method.
2. If you have appreciated stock, mutual fund, or another asset you can gift it to the church and avoid capital gains taxes and get credit for a charitable gift. This could save you 10% or 15% in taxes, depending on your tax bracket. The tax savings make this a great way for some people to make a gift.
3. Making a regular gift every month from your checking account can allow many people to make a bigger gift than they ever thought possible. A gift of \$30 per month (\$1 per day) comes to a total gift of \$1,080 over a three-year period. A gift of \$100 per month is \$3,600.
4. Giving a gift through your estate. A variety of methods exist for this, including leaving a portion of or your entire IRA, by including the church through your will, and even establishing a Charitable Remainder Trust or Charitable Gift Annuity. For more information on the best ways to include the church in your estate plans, contact Theresa Shaw at the church office.

Everyone's situation is different. Our Capital Campaign will be successful if everyone prayerfully determines the best way to make their best gift. There is no one size fits all. Please pray about and discern how God is calling you to be involved.



WHEN CHRIST FLINGS WIDE THE DOOR

As your pastor, I carry so many stories in my heart; stories of how God has used Emmanuel to ***Fling Wide the Door***. A man in our congregation had once been part of a faith community up north, and due to a divorce, he was no longer allowed to take Holy Communion at the church he was attending. Later in his life, he was blessed to remarry. When he and his dear wife eventually came to Naples, we had the opportunity to welcome them. Yet, during Holy Communion, because of a prior message of rejection and exclusion, he remained seated while his wife came forward. I didn't know this back story, until one morning he came forward with his wife. With palms open, they knelt at the altar. She had tears in her eyes

and so did he. Eventually I discovered it had been 52 years since he'd last received the body and blood of Christ for the forgiveness of sin! Through the good news, messages of love and acceptance, the gospel proclamation finally broke through to him, a prodigal with a homecoming! Jesus Christ, the host of this holy meal, welcomes sinners. Yes, all of us!!! Thanks be to God!



Emmanuel
Lutheran Church

Emmanuel
777 Mooring Line Dr, Naples, FL 34102
(239) 261-0894 • elc@naplesemmanuel.org
<https://naplesemmanuel.org>